

Outdoor / Shutters / Aluminium Shutters



## Aluminium Shutters

Combining elegance and durability to maximise your indoor and outdoor spaces.

Weathermaster®



# Combining strength, security and flexibility

## Providing the right mix of light, airflow and temperature control

Aluminium Shutters by Weatherwell® combine elegance, durability and versatility to bring indoor and outdoor spaces closer together. Providing the right mix of light, airflow and temperature control, this window solution allows you to maximise your living spaces without sacrificing the existing design elements.

## Made to measure, easy maintenance, and built with strength and security in mind

These shutters also allow you to customise your window coverings to your styling needs, choosing colour, panel configuration and blade size. With the option of fixed or moveable panels, allows for easy function and styling in any room inside or outside of the home.

Ideal for external applications, Weatherwell Aluminium Shutters have four security options to select from: Flush Bolt, Security Bolt, Lockable Metal Handle and Blade Stay, so both your design and safety needs are met. There are four standard powder coat finishes along with four timber wraps, which offer the look of the traditional timber shutter with the durability of aluminum.

### Benefits

- Provides light, airflow and temperature control
- Ideal for external applications
- Four security options
- Three blade sizes
- A selection of standard powder coat finishes and timber wraps
- Easy functionality with style

## For beachside patios

Do you have a great outdoor space you want to use all year round? Weathermaster® can transform a beachside home into an enjoyable patio in the ever changing ocean climate. The Multifold option enables you to pull the shutters to the side on beautiful days or close them off quickly when the high winds roll in.



## For outside deck turned oasis

Deck turned private oasis! An outside deck that has never been used due to close neighbours can become an oasis when enclosed with Fixed Aluminum Weatherwell Shutters. Movable blades can be set in any position to give any homeowners ultimate flexibility and solitude. No more prying eyes.

## For downtown high-rise buildings

City sleek with wind protection! The robust design of Aluminium Shutters gives them the strength to survive high winds while maintaining a sleek look. This downtown high-rise apartment was looking for a way to protect furniture from winds. Sliding aluminum shutters met all the needs of security while maintaining the design continuity of the building.

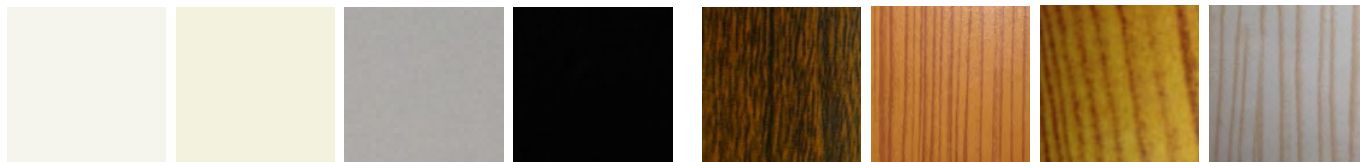


## For resort style living

Weatherwell Aluminum shutters are perfect for extending the luxurious look of timber shutters into external and high-use areas, ideal for ensuring privacy for the hot tub or courtyard areas around your property. Hinged shutters will maintain the picturesque view and privacy while allowing airflow through the blades.

# Your choices

## Standard hardware colours



White

Pearl

Silver

Black

Walnut

Light Cedar

Golden Oak

Limewash

There are four standard powder coat finishes along with four timber wraps which offer the look of the traditional timber shutter, with the durability of aluminum. Custom colour finishes are applied as a powdercoat. Blade end caps will be colour matched to the custom colour selected.

## Available security features



### Flush bolt

The flush bolt option is available with Hinged in Frame, Hinged no Frame and Multi-Fold (bottom only) installations.



### Security bolt

The security bolt of Weathermaster Aluminium Shutters is stainless steel and is placed at the top or bottom of the selected panel(s) stile on the opposite side of the hinges. Available in Hinged in Frame and Hinged No Frame installations.



### Lockable metal handle

When a handle is ordered with an 89mm or 114mm blade, it's default position will be adjacent to the mid-rail so the handle will clear the blade protrusion.



### Blade stay

Elegantly incorporated into the blade, the blade stay allows you to position the blade into a fixed open or closed position. This function prevents the wind from blowing the shutter closed.

## Fixing options



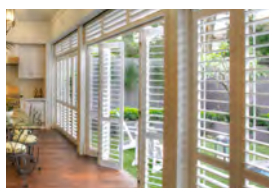
### Hinged options

Either direct hinged or with frames, flexibility for most installations.



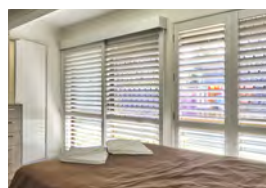
### Fixed in panel

Movable blades can be set in any position to give any homeowners ultimate flexibility and solitude.



### Multifold

The most flexible of all the installation types. Used to completely fold the shutters away from the opening when a non obstructed view is required. They can be recess fit or face mounted.



### Sliding

Sliding shutters are a great option when you need to place over sliding doors, enclose balconies or any other outdoor area. Sliders win points for easy operation but cannot be fully removed from the view.

### Blade options

Available in three blade sizes - 64mm, 89mm, and 114mm Elliptical Louvres.

